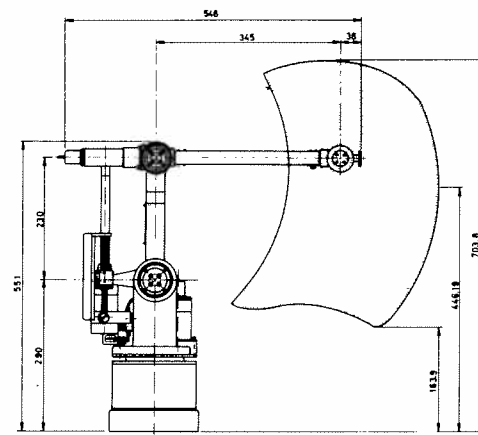
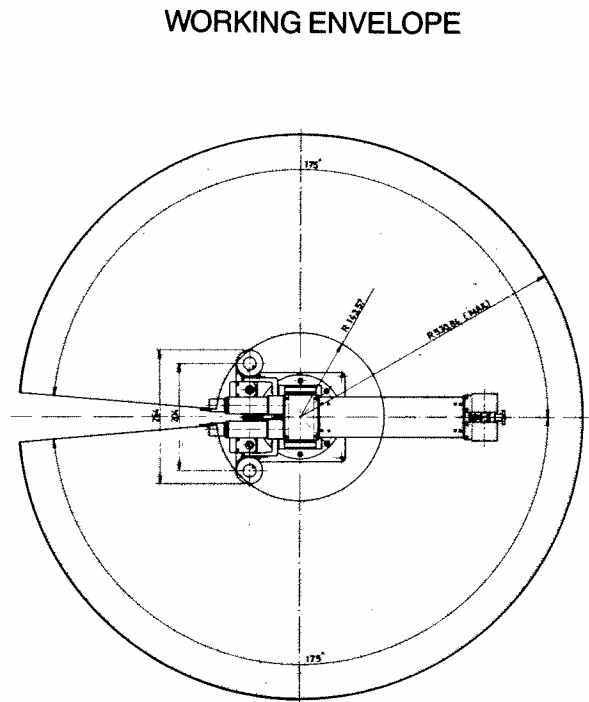


SPECIFICATIONS

ROBOT ARM	Structure	Articulated	
	Degree of Freedom	6 axes (including gripper)	
	Drive System	DC servomotor	
	WORKING RANGE	Base Rotation	350°
		Upper Arm	65°
		Forearm	65°
		Wrist Pitch	180°
		Wrist Roll	350°
	Gripper Opening (Motor Driven Gripper)	60mm (2.36 in) maximum	
	Gripper Opening (Pneumatic Gripper)	45mm (1.77 in) maximum	
Maximum Speed	900 mm/sec (35 in/sec) at TCP		
Payload	1.2 kg (2.64 lb)		

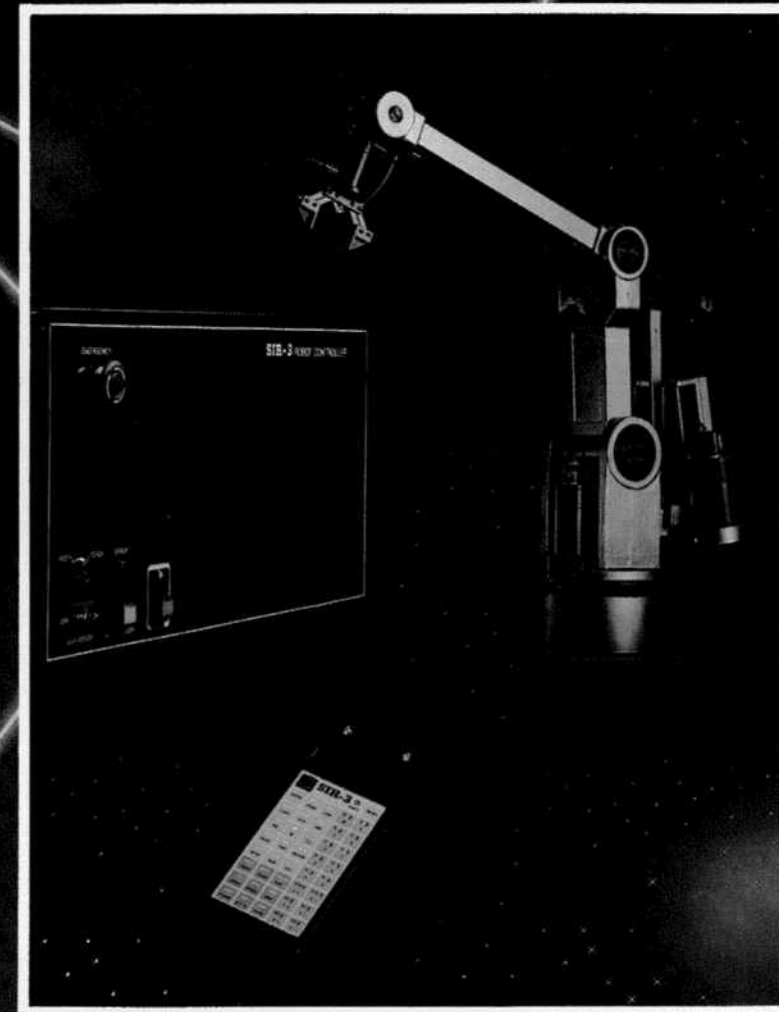
CONTROLLER	Teaching Method	Teaching playback
	Simultaneously Controlled Axes	8 axes
	Control Method	PTP with dedicated microprocessor control for all axes. Close loop position and speed control
	Position Feedback	Incremental optical encoder with resolution of 400 pulses/rev
	Speed Setting	10 Steps
	Operation Mode	<ul style="list-style-type: none"> Local mode: programming, editing & defining points Host mode
	User Memory	32K bytes standard
	Maximum Number of Programs	99
	Program Storage	<ul style="list-style-type: none"> Built-in lithium battery back-up memory Diskette Cassette Tape
	System Input/Output	<ul style="list-style-type: none"> Teach pendant interface RS-232C serial interface Cassette I/O interface
	Internal Output	<ul style="list-style-type: none"> Pneumatic gripper control (optional) Conveyor control (optional)
	External Input/Output	<ul style="list-style-type: none"> 8 digital inputs 8 digital outputs 8 relay outputs (optional)
	Safety Feature	<ul style="list-style-type: none"> Motors stop automatically without loss of program should the robot arm encounter obstacle Emergency stop buttons are installed both on the teach pendant and front panel to enable user to stop the robot arm immediately during an emergency
	Weight	32.5 kg (71.5 lb)
Power Supply	110/230 VAC ± 10% 60/50Hz single phase	



All dimensions in mm

For enquiry, please contact:

SIR-3
R O B O T



The Right Choice
Performance vs Price

Specifications are subject to change without notice.